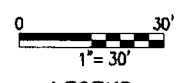
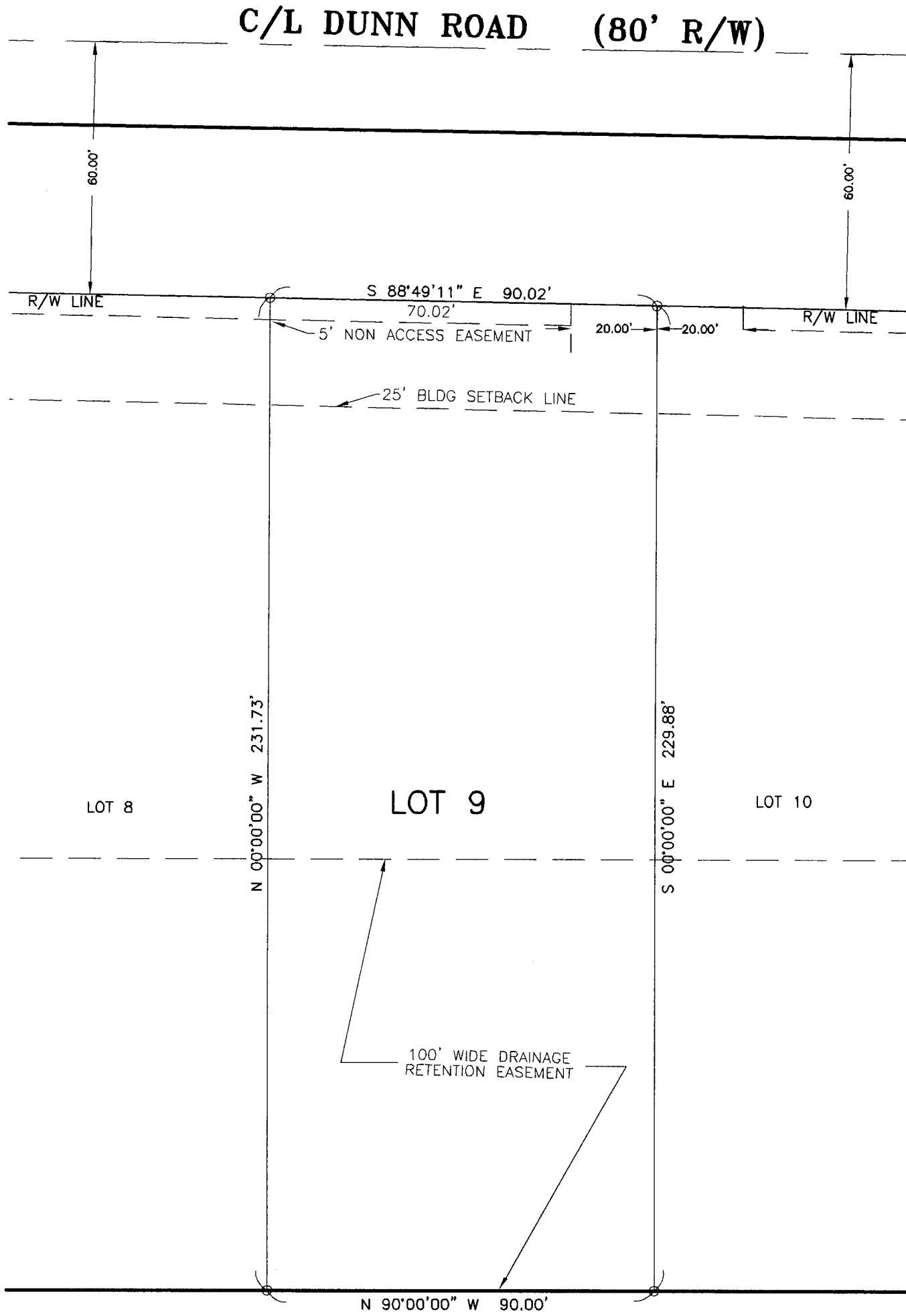


WINTERGREEN MEADOWS LOT 9

SURVEY ORDERED BY: COOREMAN REAL ESTATE GROUP, INC
 SURVEY DATED: 11-16-2007
 PROJECT NO.: 070114

LEGAL DESCRIPTION

PART OF THE SOUTHWEST QUARTER OF SECTION 35, T.38 N., R.1 W. TOWN OF
 NEW CARLISLE, OLIVE TOWNSHIP, ST. JOSEPH COUNTY, INDIANA
 LOT 9, WINTERGREEN MEADOWS MAJOR SUBDIVISION SECTION 1.



LEGEND

- FOUND IRON PIPE
- SET IRON PIPE W/CAP
- SET WOOD HUB

Danch, Harner & Associates, Inc.



Land Surveyors • Professional Engineers
 Landscape Architects • Land Planners

Office: (574)234-4003 / (800)594-4003 • Fax: (574)234-4119
 1643 COMMERCE DRIVE • South Bend, IN 46628

