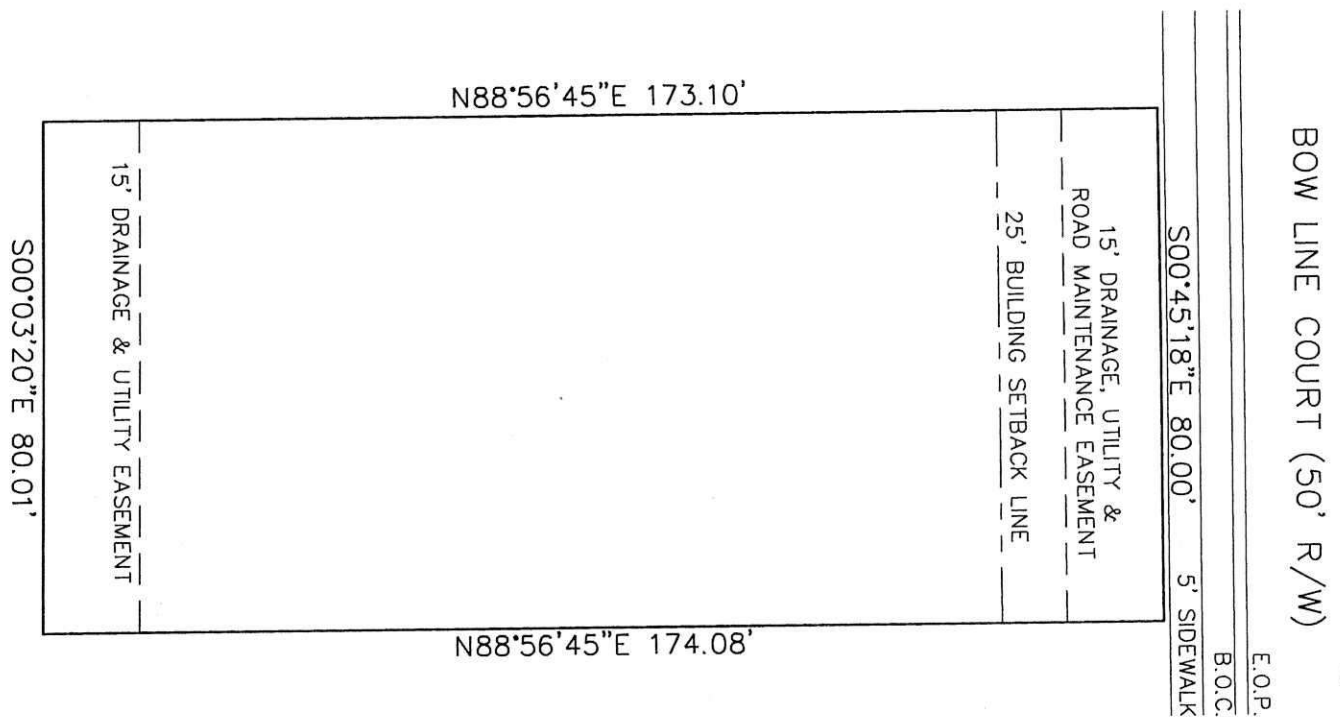


LOT 59 THE VILLAS AT LAKE BLACKTHORN, SECTION ONE,
 PART OF SECTION 18, TOWNSHIP 38 NORTH, RANGE 2 EAST, GERMAN TOWNSHIP,
 RECORDED UNDER INSTRUMENT NUMBER 0323151,
 IN THE OFFICE OF RECORDER OF ST. JOSEPH COUNTY, INDIANA



13,887 SQ. FT.
 (0.32 ACRES)



LEGEND

E.O.P. EDGE OF PAVEMENT
 B.O.C. BACK OF CURB

LOT DRAWING FOR
 COOREMAN
 REAL ESTATE GROUP



ABONMARCHE CONSULTANTS, L.L.C.

750 Lincoln Way East South Bend, Indiana 46601 (574) 232-8700 FAX: (574) 251-4440	341 Airport N. Office Park Fort Wayne, Indiana 46825 (260) 497-8823 FAX: (260) 497-8555	6330 E. 75th St., Suite 178 Indianapolis, Indiana 46250 (317) 578-0800 FAX: (317) 578-0802
--	--	---

DATE: 05/05/03

SCALE: 1"=30'

ENGINEERING / LAND SURVEYING / PLANNING / CONSTRUCTION SERVICES