

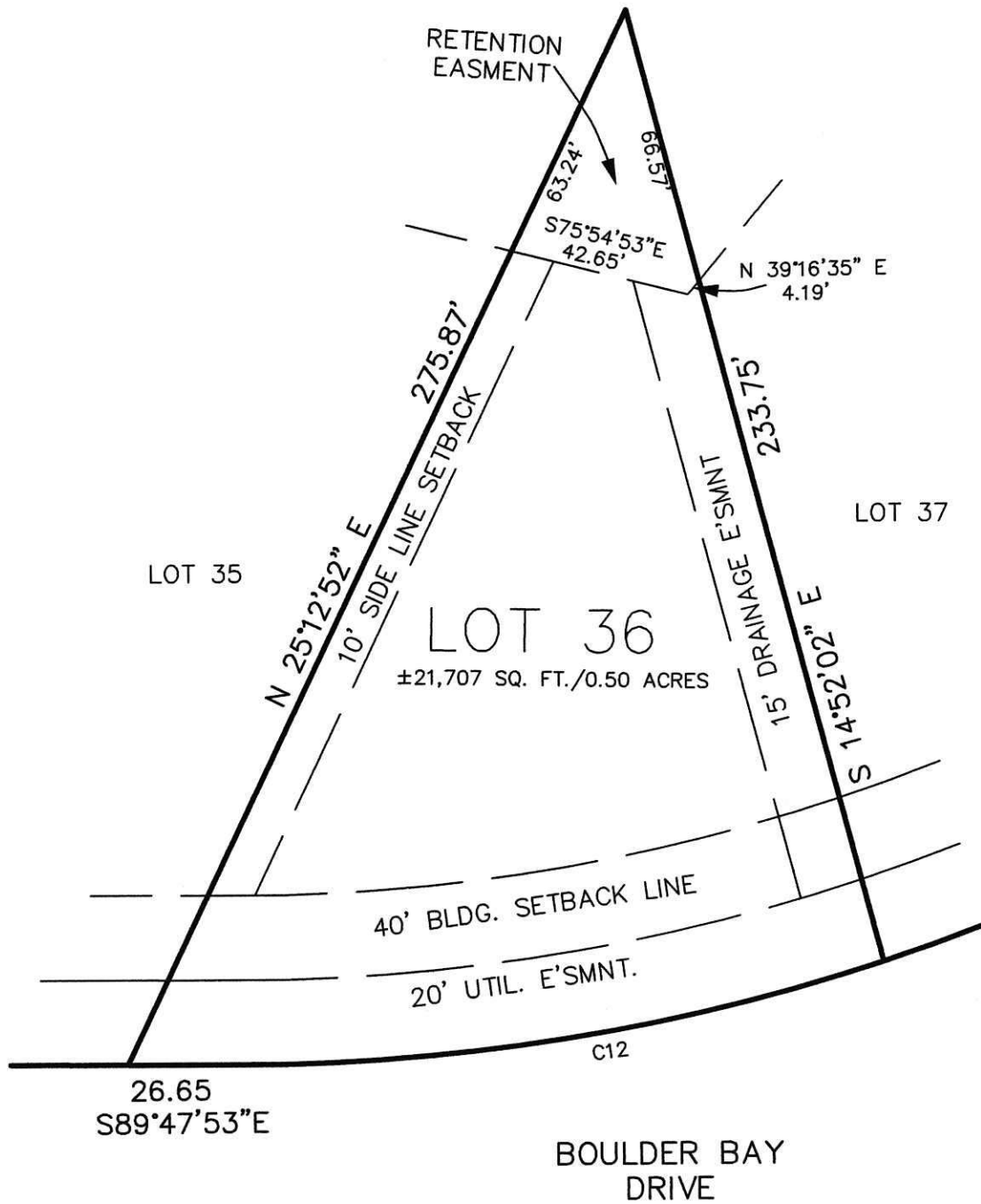


# Bollinger, Lach & Associates, Inc.

## SITE PLAN

RE: 26647 BOULDER BAY

| CURVE TABLE |        |        |        |               |           |
|-------------|--------|--------|--------|---------------|-----------|
| CURVE       | RADIUS | LENGTH | CHORD  | BEARING       | DELTA     |
| C12         | 480.00 | 153.36 | 152.71 | S 81°02'56" W | 77.34     |
|             |        |        |        |               | 18°18'23" |



SCALE: 1"=40'

SIDELINE SETBACKS BETWEEN LOTS MUST BE A COMBINED 20' MINIMUM, WITH 8' MINIMUM ALLOWED ON ONE LOT.

CONSULTING  
ENGINEERS  
& LAND  
SURVEYORS

**Bollinger, Lach & Associates, Inc.**

24545 BRICK RD. • SOUTH BEND, IN 46628 • (574)-243-5700

DRAWN: AB

CHKD: AB

FB: \_\_\_\_\_

RF: \_\_\_\_\_

DISK: \_\_\_\_\_

JOB: 791S-000