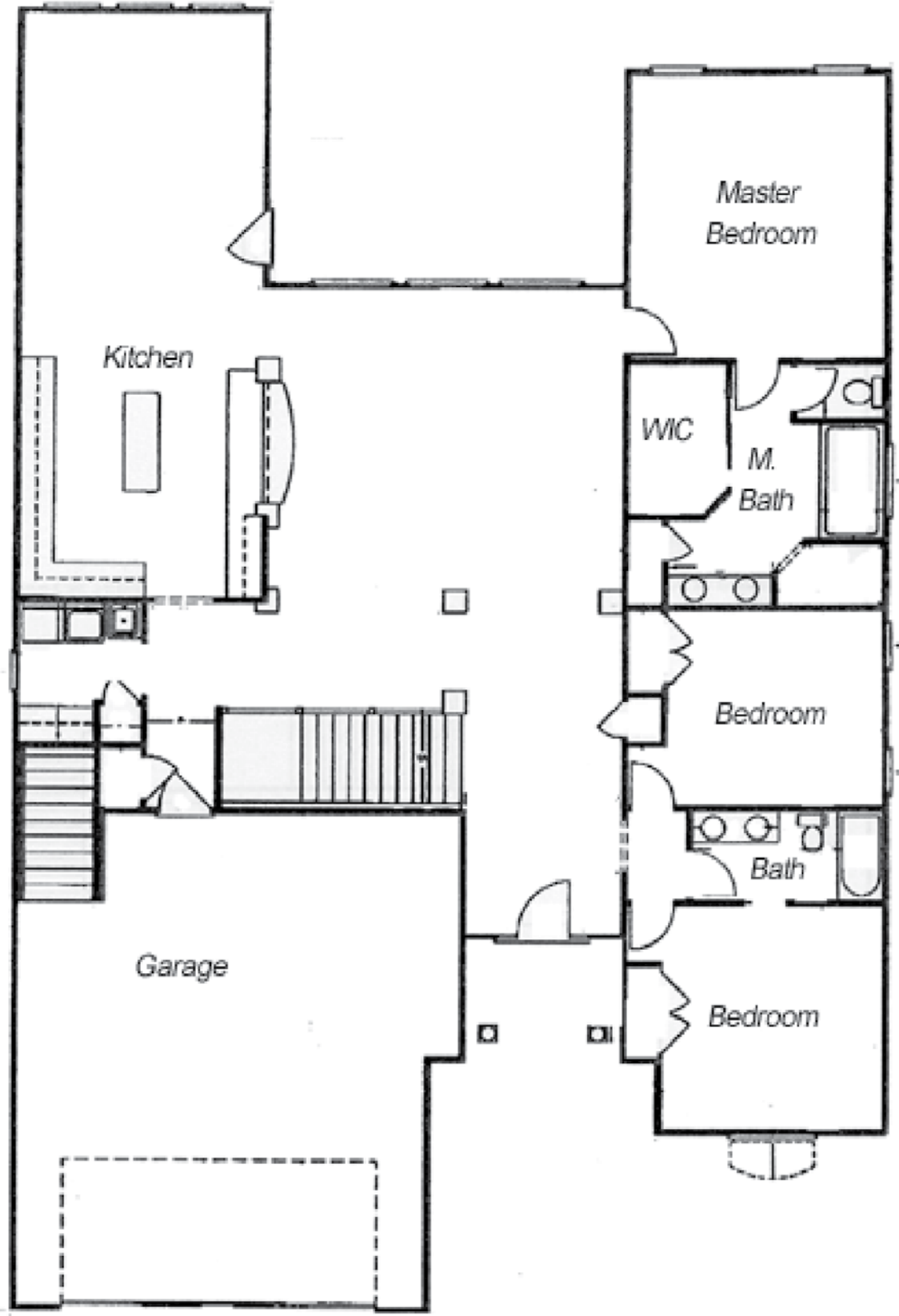


FLOOR PLAN



Cooreman Real Estate Group Presents.....



LUXURY WATERFRONT HOME THE VILLAS AT LAKE BLACKTHORN



*Offered at \$399,000**

Property Overview

4830 Portside Drive South Bend, IN
Villas at Lake Blackthorn - Lot #64

Main Level.....	2300
Lower Level.....	1200
Total SF.....	3500
Exterior.....	Exterior Accents, Covered porch, Waterfront
Bedrooms.....	4
Baths.....	3
Details.....	Finished basement, built-ins, deck, fireplace, Broker Owned property, Maintenance Free, lakefront
Garage.....	2 car
Other Features.....	Tax Abatement



(Photos depict similar view of Lake Blackthorn)



4404 Technology Dr.
South Bend, IN

574-277-0116
Cooreman.com

Call Steve Cooreman – (574) 250-5024

Artwork, renderings, and other images are for illustrative purposes only. See construction plans for actual specifications. Information deemed reliable but not guaranteed.

*Price is subject to change without notice. Artwork, renderings, and other images are for illustrative purposes only. See construction plans for actual specifications. Information deemed reliable but not guaranteed.

INTERIOR AMENITIES & FEATURES:



GOURMET KITCHEN



- Spacious **gourmet kitchen** offers luxury & convenience!
- **Beautiful light & bright** cabinetry
- **Look through into Living Room**
- Panoramic views of **Lake Blackthorn**
- **Luxury ceramic tile** flooring
- **Granite island & counter tops**
- Spacious **dining area** with Gas Fireplace
- **Stainless Steel Appliances & Gorgeous fixtures**



DINING ROOM



- **Elegant & comfortable** dining area
- Ceramic tile flooring
- Gas fireplace with mantel
- Beautiful waterfront views



FAMILY ROOM



- **Panoramic views of Lake Blackthorn**
- **Attractive columns and trim**
- **Beautiful Tray Ceiling and ledges**



INTERIOR AMENITIES & FEATURES:



MASTER SUITE



- Spacious luxury master suite
- **Gorgeous views of Lake Blackthorn**
- **Tastefully decorated**
- **Luxurious carpeting** throughout



MASTER BATHROOM



- Master bath provides a sanctuary for luxury & relaxation.
- His & hers vanities with **Granite counters**
- **Jacuzzi tub & separate walk-in shower**



FINISHED LOWER LEVEL



- 1200 Square feet in **lookout lower level**
- **Family room, bathroom, & 2nd master suite**
- **Daylight windows** look out to beautiful Lake Blackthorn



WATERFRONT



- Deck located off living Room offers beautiful views
- Great for entertaining & relaxing
- **Gorgeous year round views of Lake Blackthorn**
- **Sparkling waters, majestic fountains, & wildlife**